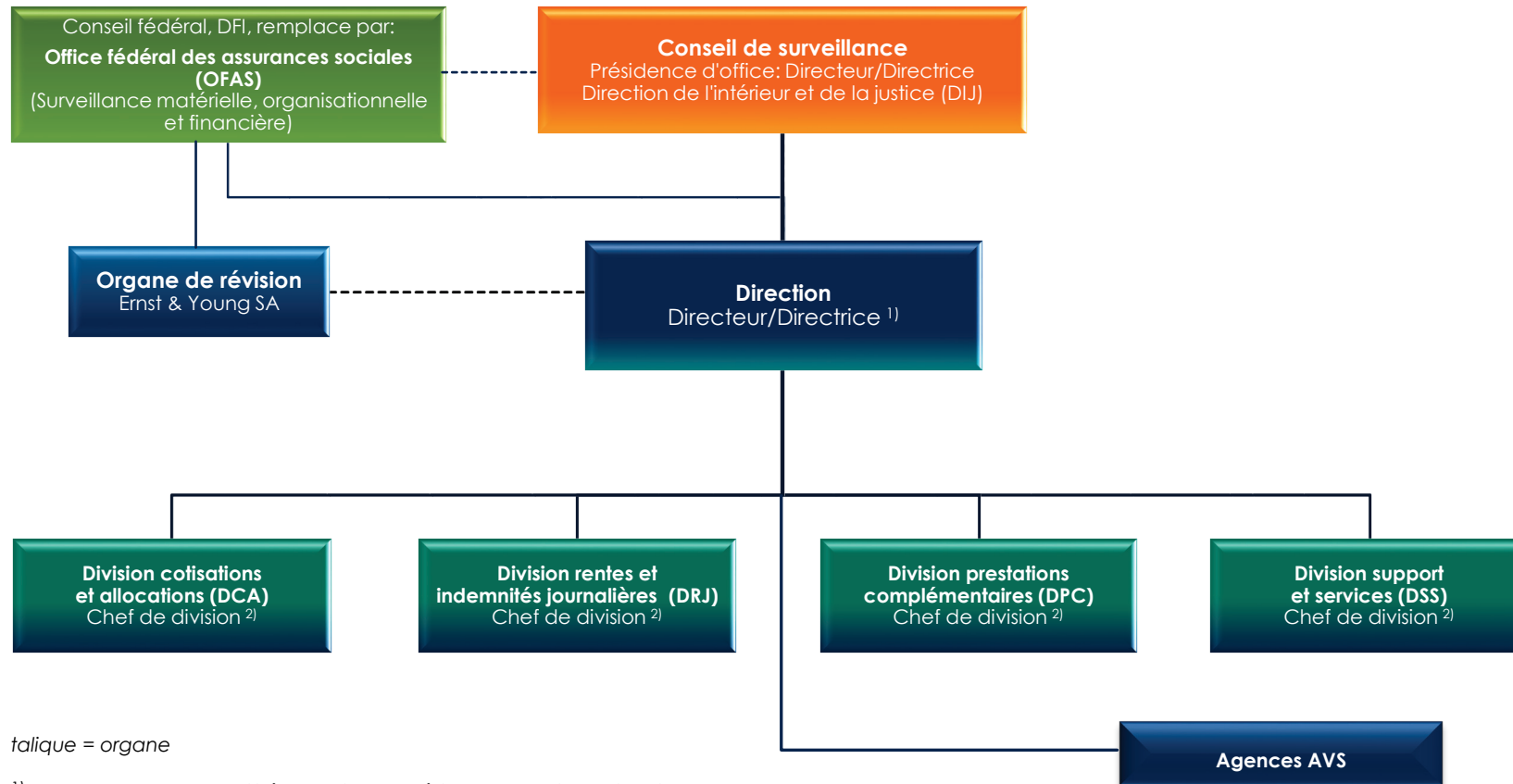




Organigramme de la Caisse de compensation du canton de Berne (CCB)



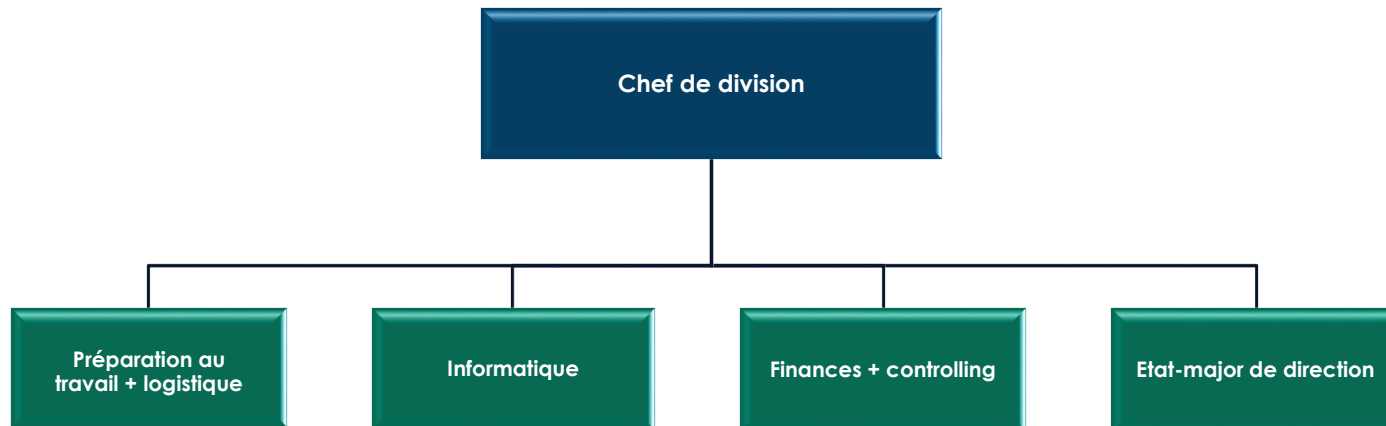
talique = organe

1) Assume la responsabilité exclusive et préside le conseil de direction

2) Membre du conseil de direction

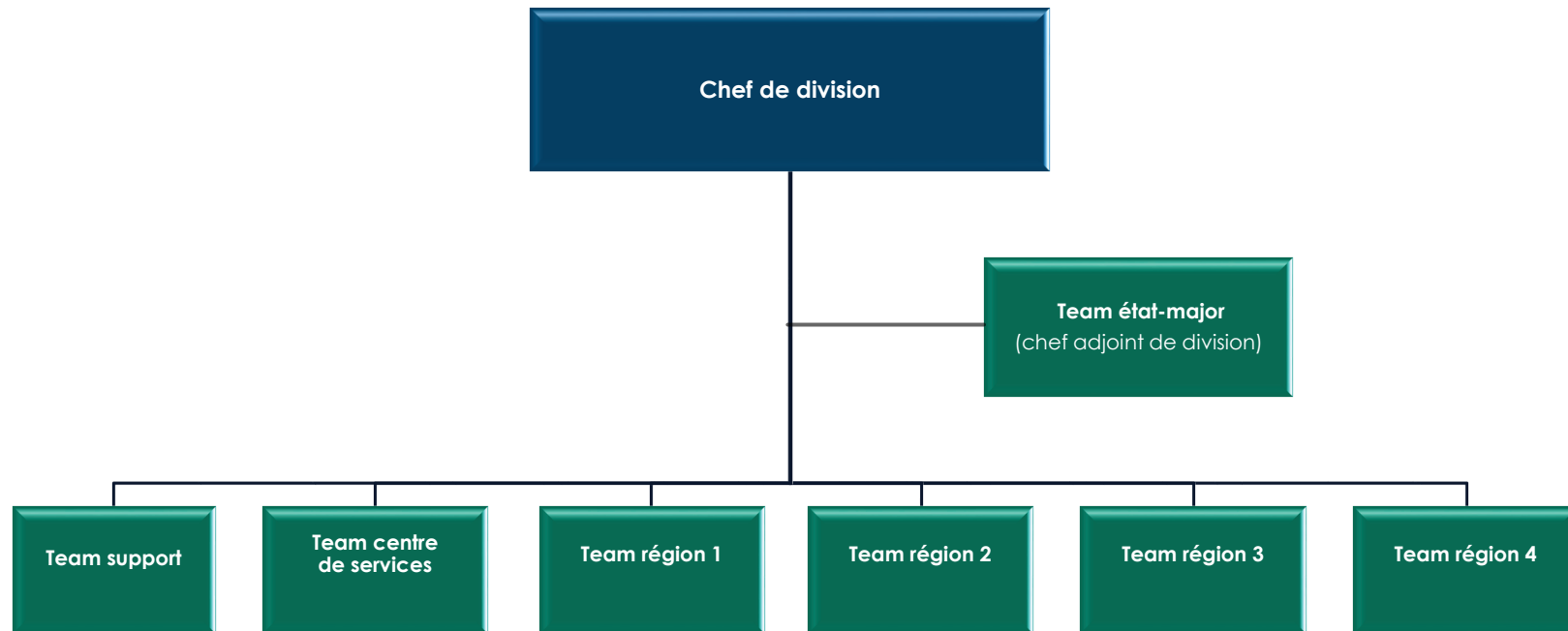


Division support et services (DSS)



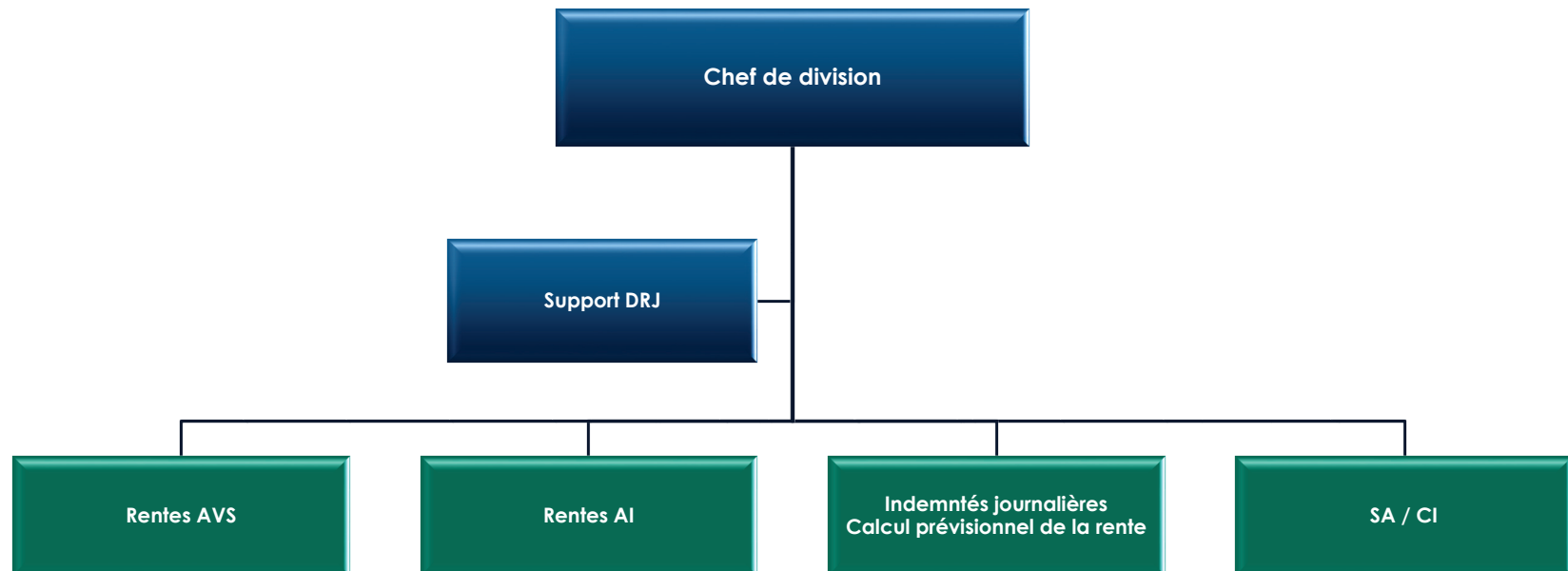


Division cotisations et allocations (DCA)





Division rentes et indemnités journalières (DRJ)





Division prestations complémentaires (DPC)

